



YD30S CASE STUDY

City Bar

BACKGROUND

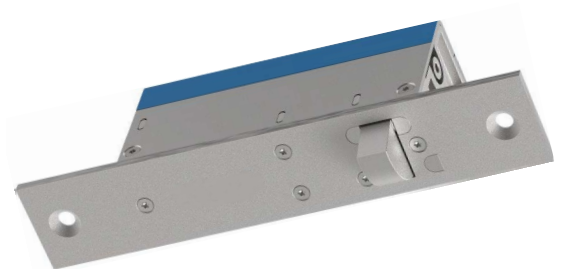
A vibrant bar located in the heart of the city needed to update its access control system to better support its fast-paced, high-traffic environment. With a steady flow of patrons and staff throughout the day and night, the venue required a solution that would complement its operational demands while aligning with safety and compliance expectations.

CHALLENGE

The bar's entrance doors faced constant wear from heavy foot traffic and frequent impact, requiring a lock that could endure daily use as well as occasional sideload stress during emergency situations. The previously installed maglocks proved inadequate, lacking both the strength and durability to provide dependable security in such a demanding setting.

SOLUTION

The YD30S was chosen for its high holding force, in excess of 1000kg, and release under sideload pressure of up to 600kg, making it ideal for tough environments and emergency situations. Its durable construction ensured long-term reliability, while the sleek design maintained the bar's modern aesthetic. The result was a secure, seamless access solution that met both the operational and safety needs of the venue.



The YD30S has a high holding force, in excess of 1000kg, and release under sideload pressure of up to 600kg.