



## YD30D CASE STUDY

# Hospital

### BACKGROUND

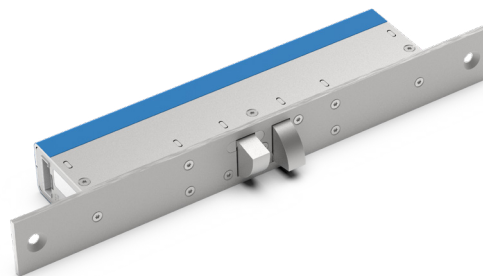
A large hospital needed to enhance security and upgrade locking solutions for internal doors. With high foot traffic and many restricted areas, the hospital faced significant risks of unauthorized access to sensitive spaces like medication storage rooms and administrative areas.

### CHALLENGE

The hospital required a lock that could reliably handle specific challenges, such as securing double-acting doors, providing monitoring, and allowing smooth emergency egress under sideload, all while performing consistently in a high-traffic environment subject to constant impact and wear.

### SOLUTION

The hospital installed the YD30D lock throughout its facility. Designed for 180° swing doors, the YD30D effectively addressed misaligned doors up to 16mm, a common issue in the hospital. Its robust design withstands frequent impacts and the constant strain of a busy medical setting, ensuring long-term durability in high-use conditions. Additionally, the YD30D releases reliably under load, a vital feature for emergency situations.



**The YD30D releases under sideload critical to ensure smooth flow through hospital corridors.**

