



YD30D CASE STUDY

Corporate Office

BACKGROUND

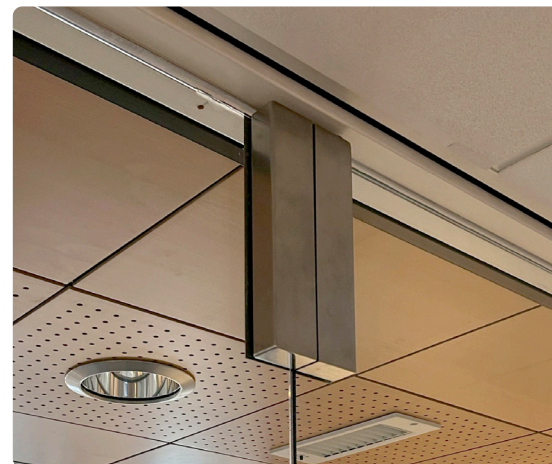
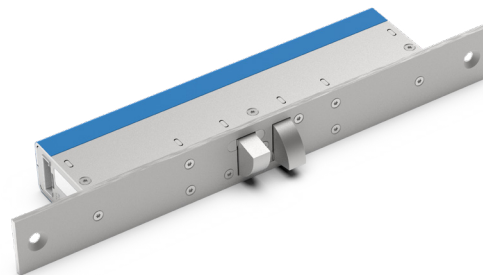
An office building needed to revamp their security solutions and update the locking products on its glass doors. With a constant flow of people coming in and out of the building both day and night, the internal doors, made of heavy duty glass, presented an issue as they were often misaligning when closing, causing access control concerns for the building manager.

CHALLENGE

The heavy-duty glass doors often misaligned, making it unsuitable for a traditional solenoid lock that would likely malfunction if installed. Paired with the fact there was constant high footfall, the building management team required a lock that could operate reliably and robustly in a consistently busy environment.

SOLUTION

Management installed the YD30D throughout the building. The YD30D lock is engineered to provide robust security for 180° doors and stands out as one of the few locks available that seamlessly functions on glass doors, essential for this office space. With its impressive 1 million cycles, this lock guarantees exceptional reliability, making it a trusted choice for high footfall areas.



The YD30D are ideal for high usage doors because of their endurance rating of over 1 million cycles.